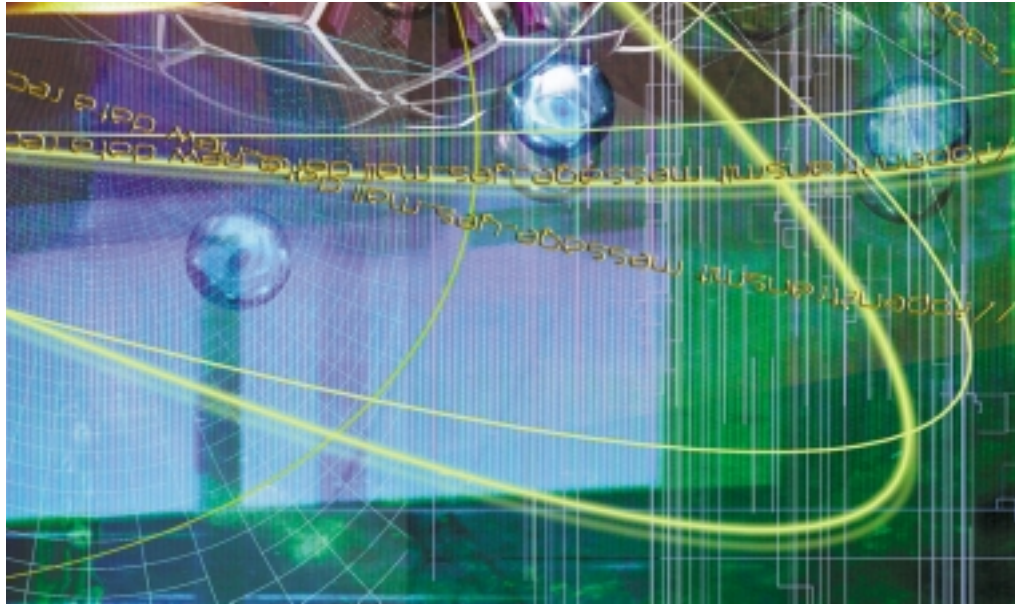


EMC Celerra FileMover



Dynamic file mobility improves the economics of consolidation

The Big Picture

- Lower costs by automating the movement of files between storage tiers in a consolidated storage infrastructure
 - Reduce application and client management through transparent file access with a single interface to multiple storage tiers
 - Improve TCO with choice of secondary storage, including CLARiiON with ATA, Celerra with ATA, Centera, tape or optical
 - Offers choice of third-party policy/migration software to meet business requirements through an open API
 - Improve operational efficiencies by simplifying management and protection of files for tasks such as backup and replication by eliminating inactive files from operations
 - Meet business objectives with EMC Services for end-to-end solutions assurance, integration, and migration
-

Take the Next Step

For more information about how EMC Celerra FileMover solutions can meet your storage management needs and benefit your business, contact your EMC sales representative or authorized EMC value-added system integrator. You can also visit our website at www.EMC.com.

EMC²

where information lives

EMC Corporation
Hopkinton
Massachusetts
01748-9103
1-508-435-1000
In North America 1-866-464-7381

EMC², EMC, Celerra, DiskXtender, Legato, and where information lives are registered trademarks and Centera is a trademark of EMC Corporation. All other trademarks used herein are the property of their respective owners.

© 2004 EMC² Corporation. All rights reserved.
Produced in the USA. 9/04

Data Sheet
C1124

Tiered storage solutions with EMC NAS

EMC Celerra[®] FileMover solutions deliver dynamic file mobility—the ability to automate the movement of files in an EMC Celerra NAS environment across a hierarchy of storage platforms. Dynamic file mobility begins with file consolidation to high-performance Celerra NAS gateways. This family of gateways includes the world's most cost-effective and scalable platforms: Celerra Network Server (CNS), NS704G, NS700G, NS600G, and the NS500G.

EMC Celerra FileMover is an open, flexible solution that enables a choice of secondary storage based on business, application, and information requirements. Active files requiring fast access can be placed on higher performance platforms while older, less frequently used files can be automatically moved to second-tier platforms including ATA, EMC Centera[™], tape, and optical. This results in higher service levels to users and a lower TCO for storage assets.

A core component of a Celerra FileMover solution is the policy and migration software. EMC, as well as third-party software providers, have integrated to the Celerra FileMover API. This enables EMC, along with our partners, to offer solutions that manage the optimization and placement of files from Celerra to secondary storage. EMC Legato DiskXtender[®] Data Manager for Celerra is a powerful, highly scalable solution that delivers policy-based, file system data management that enables automated and transparent data movement between Celerra and secondary storage platforms. DiskXtender Data Manager for Celerra allows you to more effectively manage your data between the primary NAS system and the secondary storage platforms.

Dynamic file mobility delivers transparent access to files

With Celerra FileMover solutions, Celerra remains the primary interface to clients and applications. This is a key benefit to users and applications that require access to files after they have been migrated. No changes to any applications or user file pointers are required.

Improve operational efficiencies

With business-critical data stored on high-performance/highly available enterprise NAS network servers, and infrequently used data stored on secondary storage platforms, data management operations are simplified. Operational tasks such as backup are significantly reduced because you only back up mission-critical data. Inactive files no longer have to be backed up during every backup cycle, thus reducing backup times and media consumption. The inactive files have been removed from backup operations.

High-level Celerra FileMover architecture

Maximize Celerra FileMover solution benefits with EMC Services

EMC Services maximizes the business results from your EMC Celerra FileMover solution. From planning through implementation and management, EMC has the expertise to deliver the operational efficiencies and application acceleration you need. Get started with an assessment of your current storage hierarchy, applications, and information to ensure your Celerra FileMover solution delivers maximum impact. EMC Celerra FileMover Program Management delivers comprehensive oversight and management of your solution components, including the partner-led implementation of the third-party policy and migration software. Implementation and integration of solution components, including Celerra FileMover API, EMC platforms, and software ensure maximum performance and integration of your complete Celerra FileMover solution.